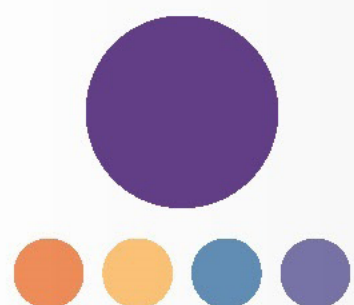


COMMUNITY ENGAGEMENT SPECTRUM

This graphic communicates the Public Health Institute at Denver Health's appreciation of the value of co-creation and community voice in public health improvement. We acknowledge that important public health work happens at every place along this spectrum. **Use this spectrum to assess and grow the engagement component of your public health practice.**

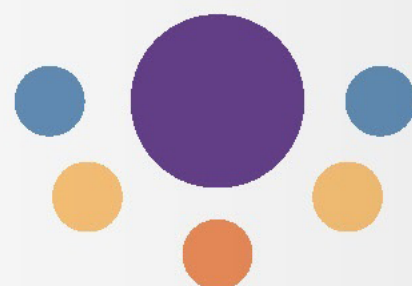


**PUBLIC HEALTH
INSTITUTE**
AT DENVER HEALTH™



INFORM & SERVE

To provide the community with accurate and culturally-appropriate information and services through outreach & education.



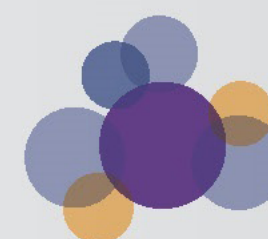
CONSULT

To obtain community feedback on analysis, programs, decisions, or services.



INVOLVE

To work directly with communities to ensure that community issues and concerns are understood and considered.



COLLABORATE

To partner with communities in each aspect of decision-making about a project.



COMMUNITY-DIRECTED

To place final decision-making in the hands of the public or community.

**Increasing community participation & communication =
Greater community trust & ownership of the work.**